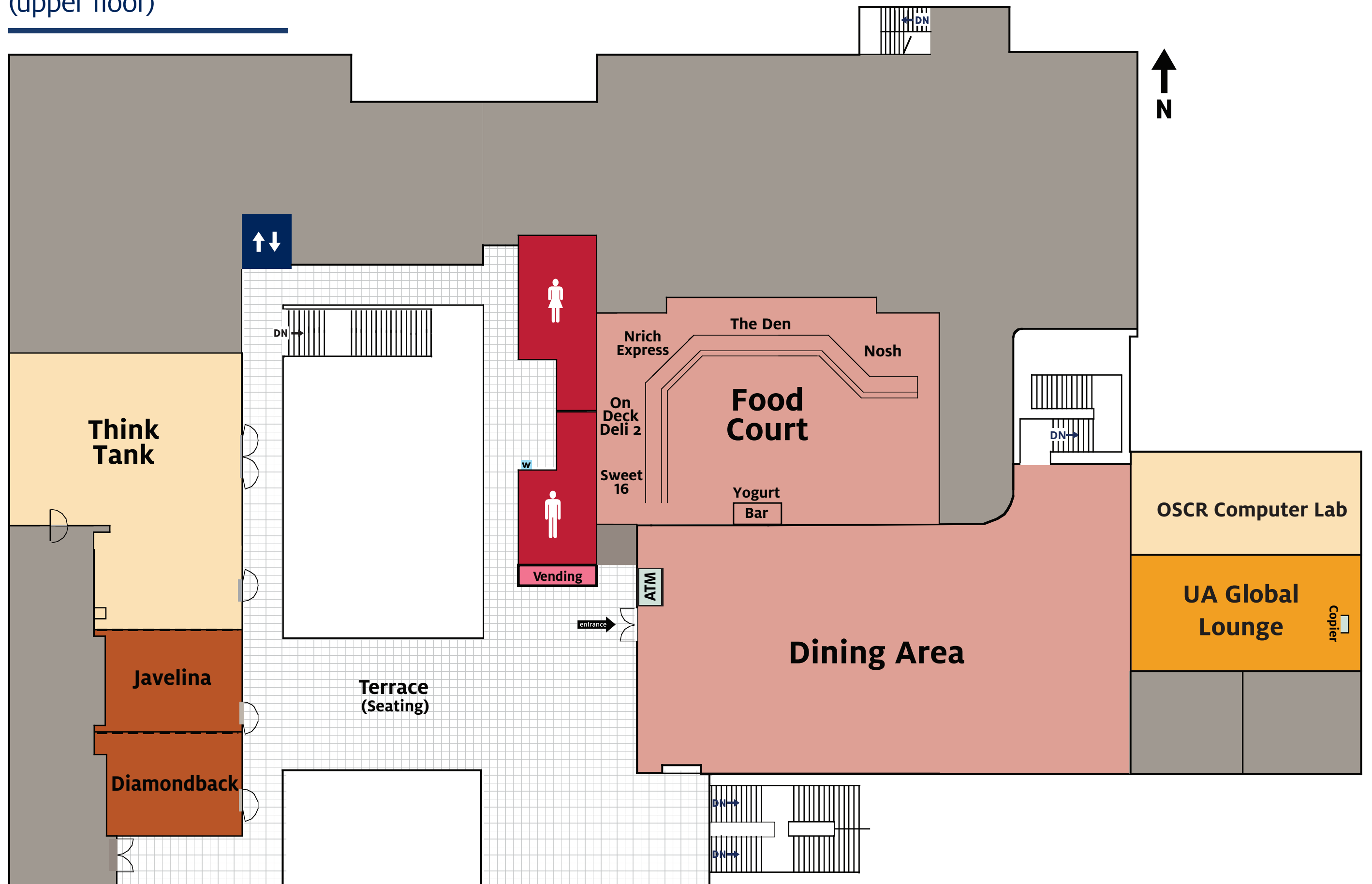


UA GLOBAL CENTER

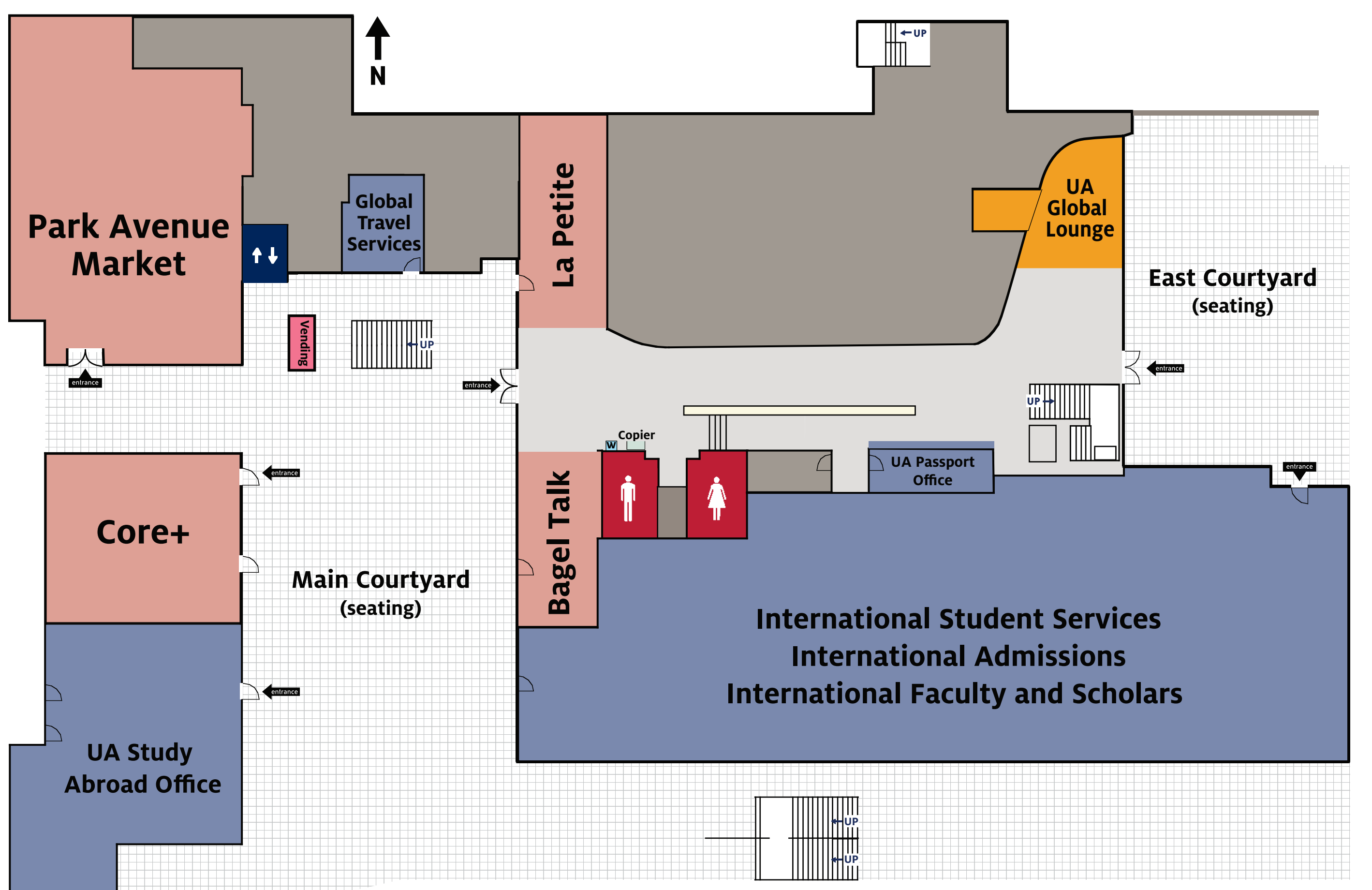
LEVEL 2 (upper floor)

- FOOD**
- Bagel Talk Level 1
- Core+ Level 1
- La Petite Level 1
- Park Avenue Market Level 1
- Food Court Level 2
 - > Nrich Urban Market Express
 - > Nosh
 - > On-Deck Deli 2
 - > Sweet 16 Ice Cream
 - > The Den
- INVOLVEMENT**
- OSCR Computer Lab Level 2
- Think Tank Level 2
- LOUNGES**
- UA Global Lounge Level 1 & 2
- MEETING ROOMS**
- Diamondback Level 1
- Javelina Level 1
- RETAIL**
- ATM Level 2
- Copiers (Self-serve) Level 2



LEVEL 1 (ground floor)

- LEVEL 1**
- Bagel Talk Level 1
- Core+ Level 1
- Global Travel Services Level 1
- International Student Services Level 1
- International Admissions Level 1
- International Faculty and Scholars Level 1
- La Petite Level 1
- Park Avenue Market Level 1
- UA Passport Offices Level 1
- UA Study Abroad Level 1
- UA Global Lounge Level 1
- LEVEL 2**
- ATM Level 2
- Copiers (Self-serve) Level 2
- Diamondback Room Level 2
- Dining Area Level 2
- Javelina Room Level 2
- PSU Food Court Level 2
 - > Nrich Urban Market Express
 - > Nosh
 - > On-Deck Deli 2
 - > Sweet 16 Ice Cream
 - > The Den
- Think Tank Level 2
- OSCR Computer Lab Level 2



The Park Student Union (PSU) is not a place of unrestricted public access. PSU is intended for the use of students, faculty, staff, guests of the University and participants in authorized on-campus activities. Loitering or interfering with this intended use is prohibited, and violators will be required to leave.
 Authority: ABOR Policy 7-201 • UA Campus Use Policy • A.R.S. § 13-2905, -2911

 UA is tobacco free.
tobaccofree.arizona.edu
 union.arizona.edu INFO: 626.7778

FLOOR PLAN KEY

- ATM
- Involvement
- Rest Rooms
- Services
- Walkways
- Elevator
- Lounges
- Restricted
- Vending
- Patis & Open Seating
- Food
- Meeting Rooms
- Retail
- Water